

## Standard Imagery

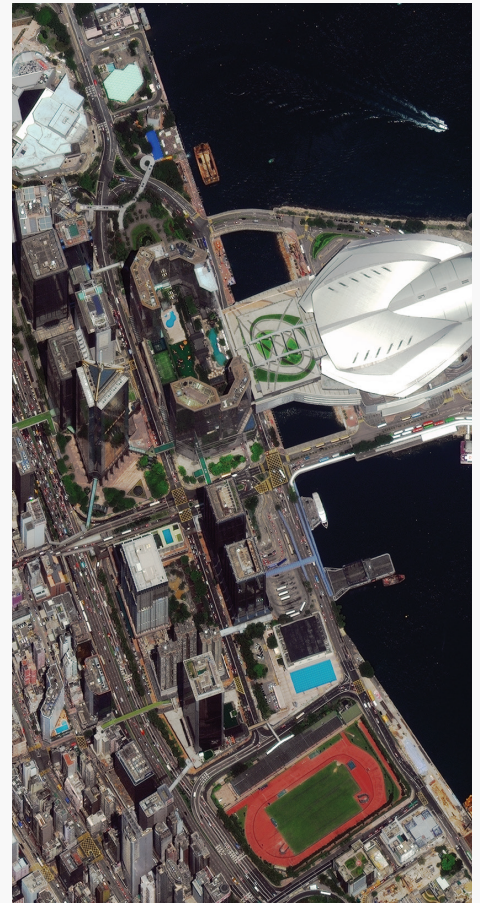
DigitalGlobe's Standard Imagery products are designed for users with knowledge of remote sensing applications and image processing tools that require data of modest absolute geometric accuracy and/or large area coverage. They use DigitalGlobe's constellation of satellites, which include QuickBird (archive only), GeoEye-1, WorldView-1, WorldView-2, and WorldView-3. Choose from our expansive archive or submit a new collection request. Standard Imagery products are available in two varieties: Standard and Ortho Ready Standard.

### Features

- » Georeferenced to a cartographic projection
  - Industry standard projections and datums
- » High resolution
  - 30 cm, 40 cm, 50 cm and 60 cm panchromatic, natural color, color infrared, or 4-band pan sharpened
  - 1.6 m – 2.4 m multispectral
- » Large image swath collection size
  - 16.4 km – 18.0 km width at nadir
- » Small minimum order size
  - 25 sq km—archive
  - 100 sq km—tasking
- » Superior image classification and analysis
  - 11-bit digitization (up to 2,048 levels of gray scale)
  - Discrete non-overlapping spectral bands
- » Open systems
  - Compatible with commercial software providers
  - Popular image file formats

### Benefits

- » Locate features in map coordinate space
- » Identify features, create maps, and detect changes from recent global imagery at the highest resolution possible from commercial imaging satellites
- » Flexible options—Standard Imagery is normalized for topographic relief and Ortho Ready Standard Imagery is ready for users to orthorectify
- » Purchase only the coverage needed for your project and budget
- » Improve feature classification and identification in dark or bright areas such as building shadows or snow and perform more flexible image enhancement
- » Get your project up and running quickly and easily based on standard map projections and formats



Hong Kong

**Xinthe**  
Excellence Forever...

## Specifications

Product options		
	Pixel resolution*	Image bands
Panchromatic	30 cm, 50 cm, as collected	Panchromatic
Multispectral (4-band)*	1.2 m, 2 m, as collected	Blue, Green, Red, NIR1
Multispectral (8-band)	1.2 m, 2 m	Coastal, Blue, Green, Yellow, Red, Red Edge, NIR1, NIR2
Bundle (pan + 4-band)	30 cm, 50 cm, as collected	Panchromatic
	1.2 m, 2 m, as collected	Blue, Green, Red, NIR1
Bundle (pan + 8-band)	30 cm, 50 cm	Panchromatic
	1.2 m, 2 m	Coastal, Blue, Green, Yellow, Red, Red Edge, NIR1, NIR2
Natural Color	30 cm, 50 cm, as collected	Blue, Green, Red
Color Infrared	30 cm, 50 cm, as collected	Green, Red, NIR1
4-band Pan Sharpened	30 cm, 50 cm, as collected	Blue, Green, Red, NIR1

Spectral characteristics (nanometers)									
	Coastal	Blue	Green	Yellow	Red	Red Edge	Near-IR1	Near-IR2	Pan (B&W)
QuickBird***		430–545	466–620		590–710		715–918		405–1053
GeoEye-1		450–510	510–580		655–690		780–920		450–800
WorldView-1									397–905
WorldView-2	396–458	442–515	506–586	584–632	624–694	699–749	765–901	856–1043	447–808
WorldView-3	400–450	450–510	510–580	630–625	630–690	705–745	770–895	860–1040	450–800

Image accuracy specifications	
QuickBird***	23 m CE90
GeoEye-1	5.0 m CE90
WorldView-1, WorldView-2**, WorldView-3	5.0 m CE90

Processing	Standard	Ortho Ready Standard
Applied corrections	Radiometric, sensor, and geometric corrections Mapped to a cartographic projection	
Geometric corrections	Projected to a plane using map projection and datum, coarse DEM applied to normalize for topographic relief	Projected to a plane using map projection and datum, projected to a constant base elevation to allow for orthorectification

Order parameters	
Product type	Panchromatic, Multispectral, or Bundle; Natural Color; Color Infrared; 4-band Pan Sharpened
Image bits / pixel	8 or 16 bits
File formats	GeoTIFF 1.0, NITF 2.1, NITF 2.0

\* All four bands delivered in a single file

\*\* Up to 30° off nadir

\*\*\*Archive Only

## Deliverables

Standard Imagery can be acquired directly from the DigitalGlobe archive or you can submit a new collection request. Standard Imagery is ordered by area, with a minimum purchase of 25 sq km for archive or 100 sq km tasking orders, up to a maximum of 10,000 sq km per order. If your order crosses more than one strip, one standard imagery product per scene is delivered. Products are delivered on your choice of standard digital media with Image Support Data files including image metadata.

## Delivery methods



Media delivery: DVD



Media delivery: external HD



Web-based delivery: FTP





EON Free Zone Pune, India





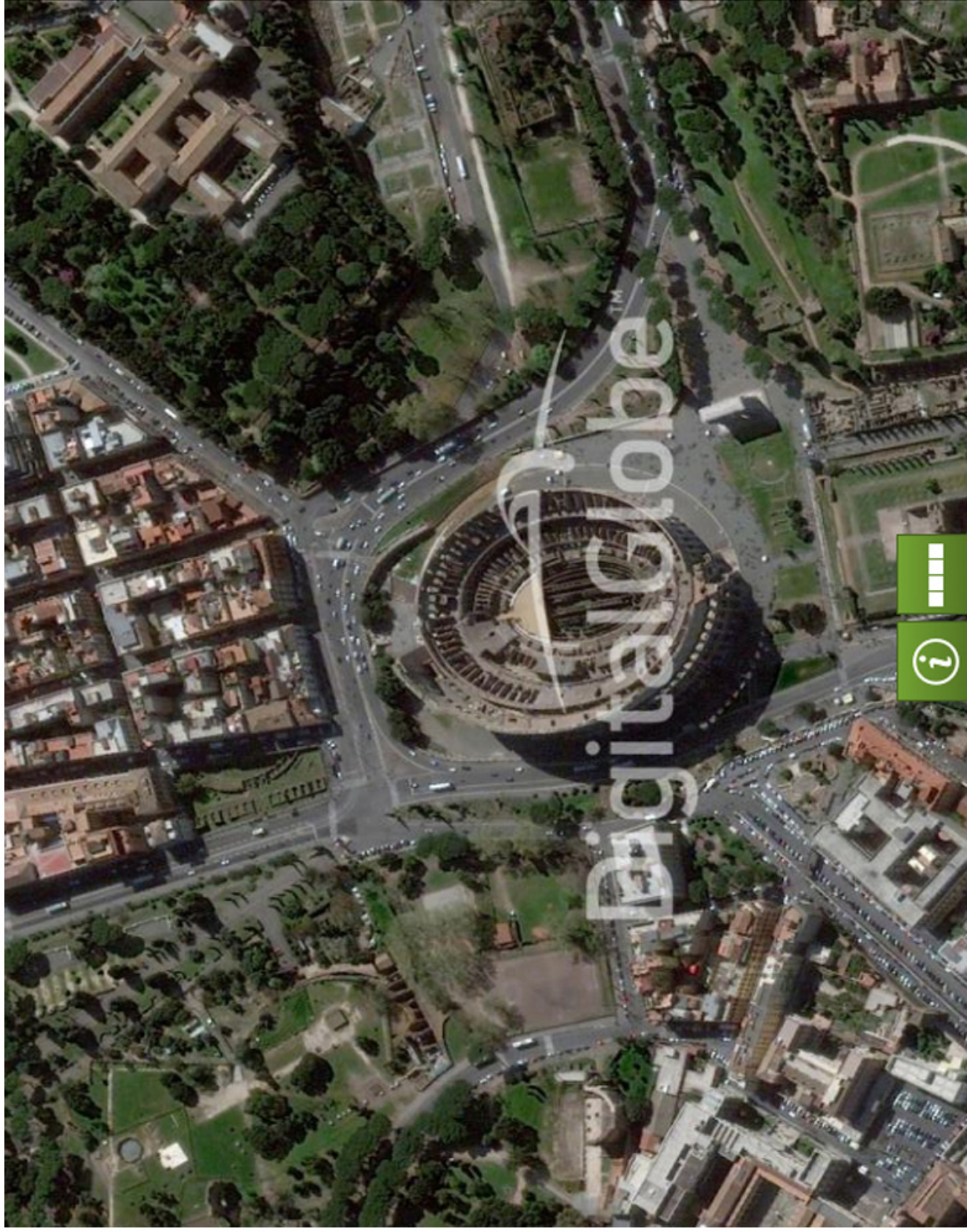
Taj Mahal, India





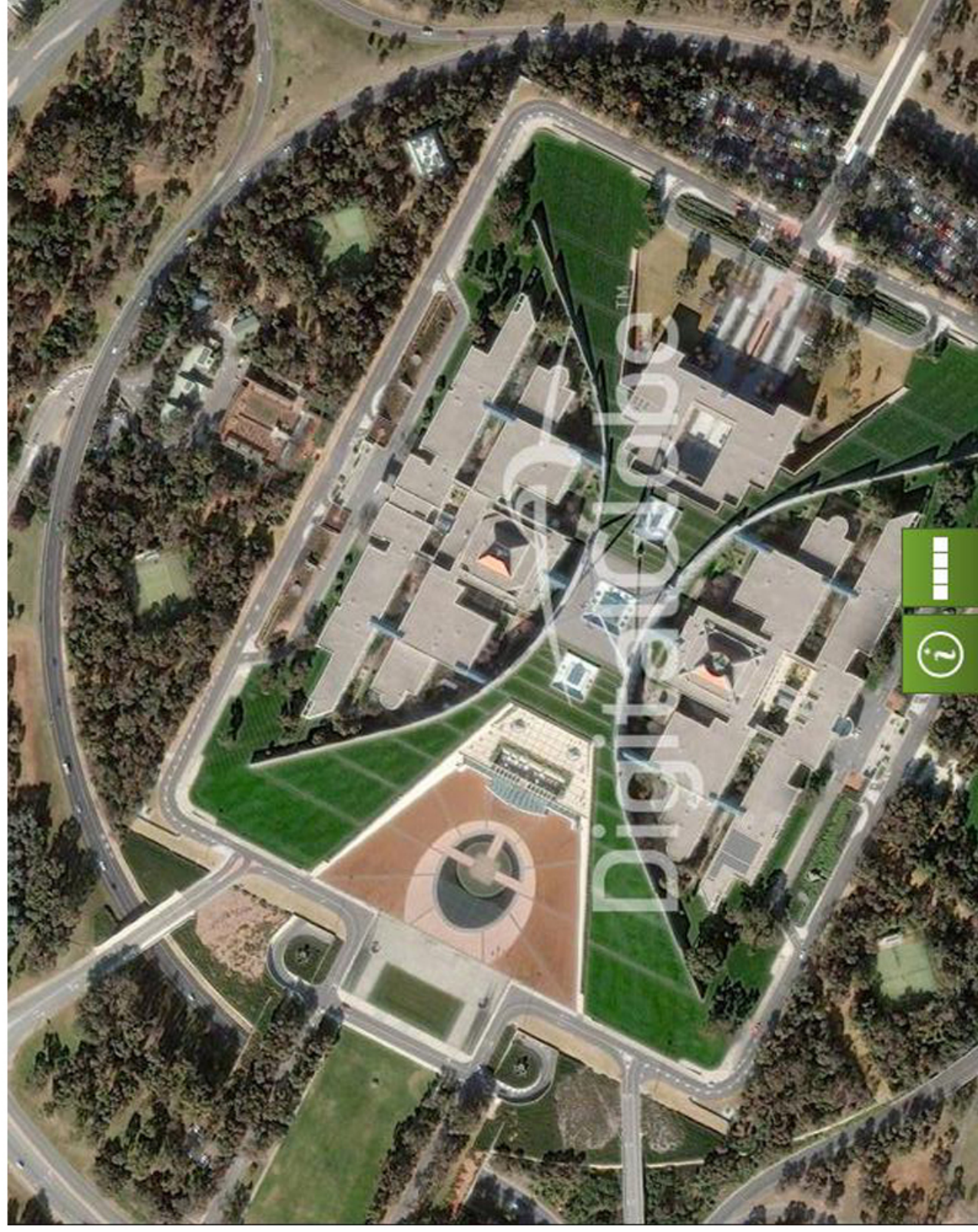
National Mall in Washington, D.C.





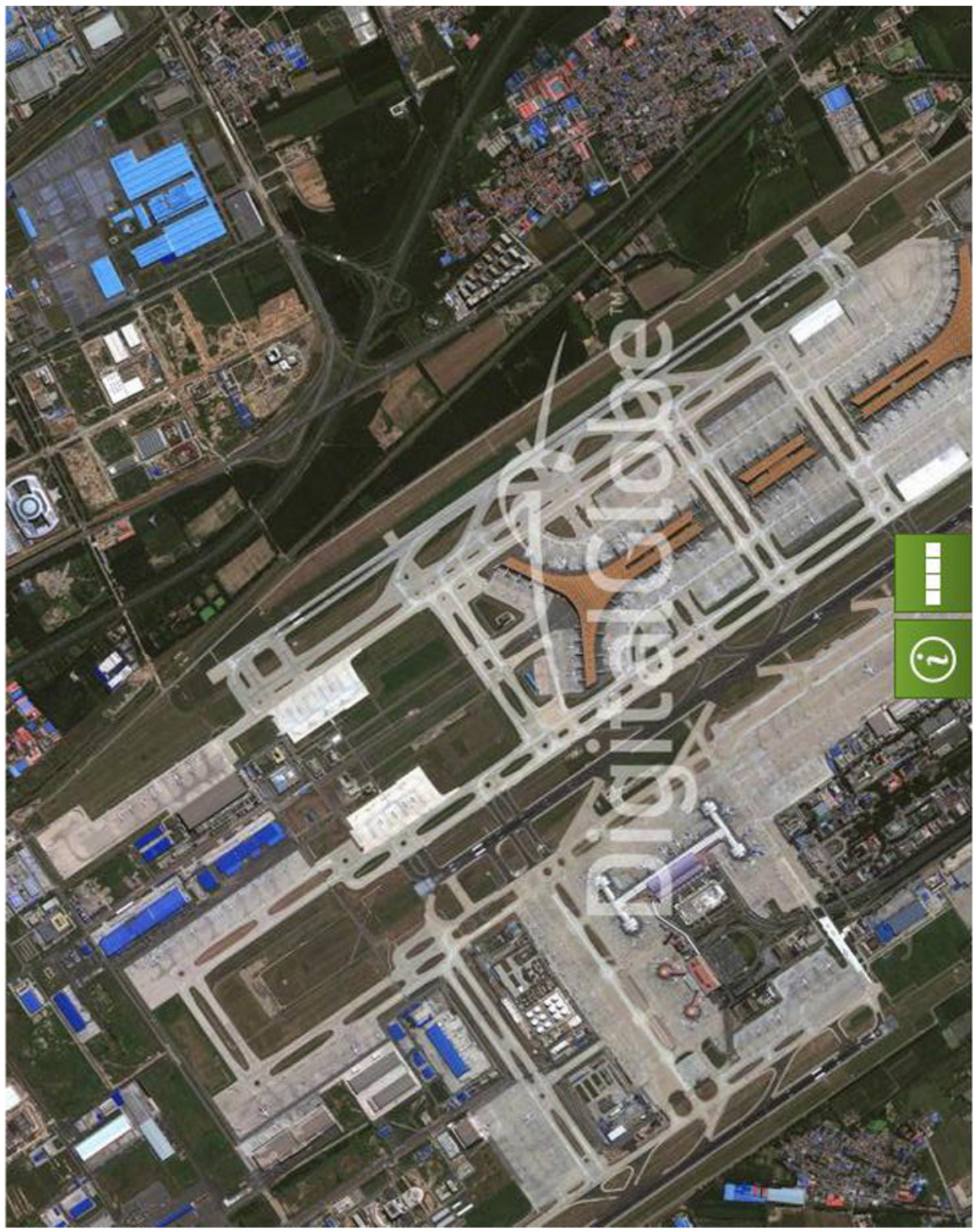
Colosseum, Rome, Italy





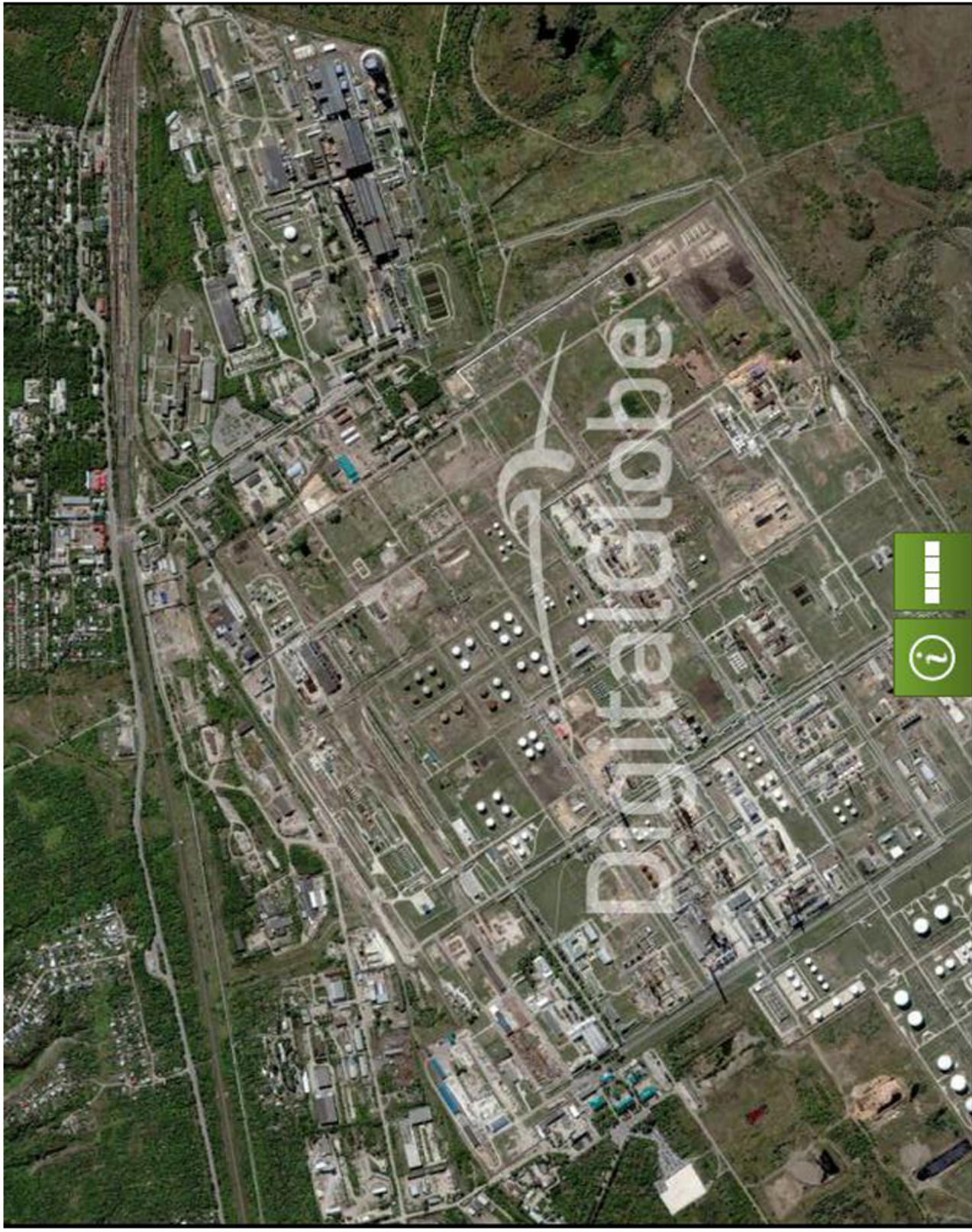
Parliament, Canberra, Australia





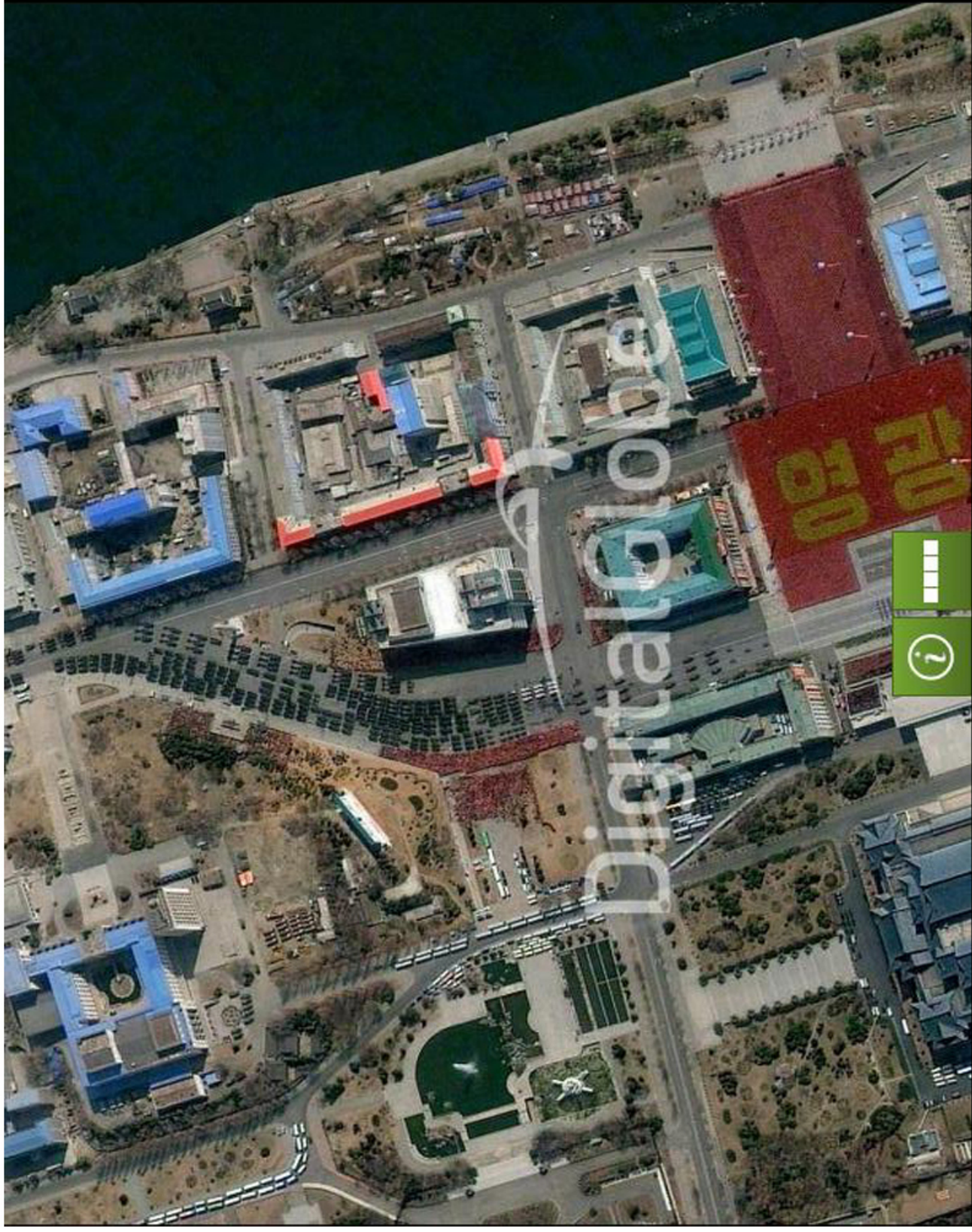
Beijing International Airport





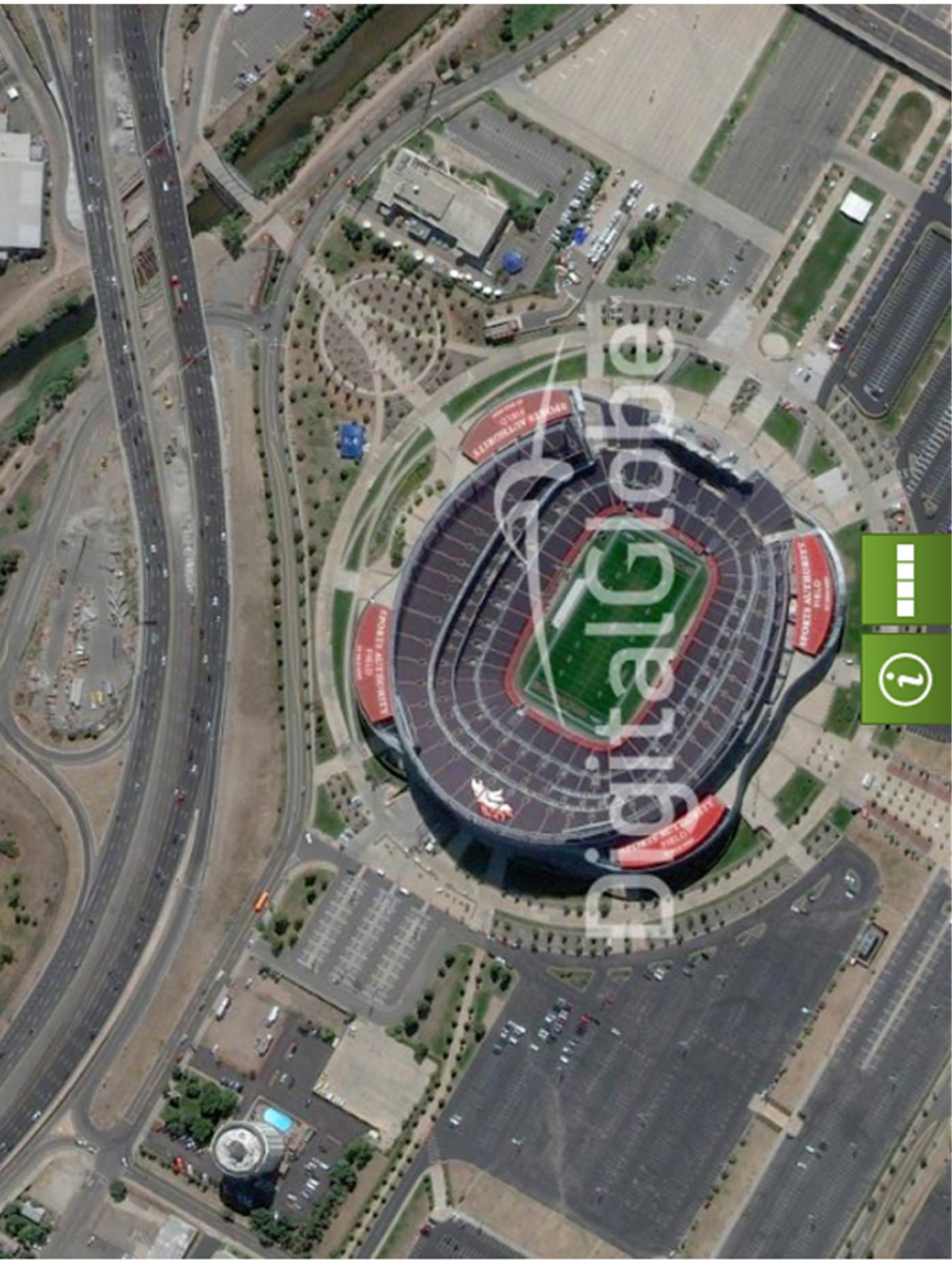
Syzran Oil Refinery, Samara, Russia





Pyongyang Parade, North Korea





Sports Authority Field at Mile High Stadium, Denver, CO, USA





Giza Pyramids, Egypt